

Engineering News



ALTEC Lansing Corporation
A SUBSIDIARY OF LING-TEMCO-VOUGHT INC.

1515 S. Manchester Avenue,

Anaheim, California

Technical Letter No. 143

ADAPTING ALTEC 695A MICROPHONE FOR USE WITH ALTEC 1568A AND 1569A AMPLIFIERS

The Altec 695A is a lightweight, hand-held microphone/amplifier. Because of the comparatively higher output signal level, the 695A may also be connected directly to the input of a power amplifier (in this case, the Altec 1568A or 1569A), without the necessity for additional preamplification. Certain modifications are required, both in the microphone switch and the power amplifier input, in order that proper operating voltage may be furnished the transistor amplifier of the 695A.

The modifications necessary in the 695A switch are self-explanatory, as illustrated in Figure 1; access to the switch is gained by removing the six back cover screws. This procedure eliminates the switching transients otherwise audible when voltage is applied to the transistor amplifier.

Current production models of the 695A utilize a felt 'stop' pad in the end of the slide switch mechanism to reduce impact noise when the switch is actuated; earlier models may easily be modified, merely by opening the switch. By this means, mechanical noise (caused by the switch being rapidly thrust home) is eliminated.

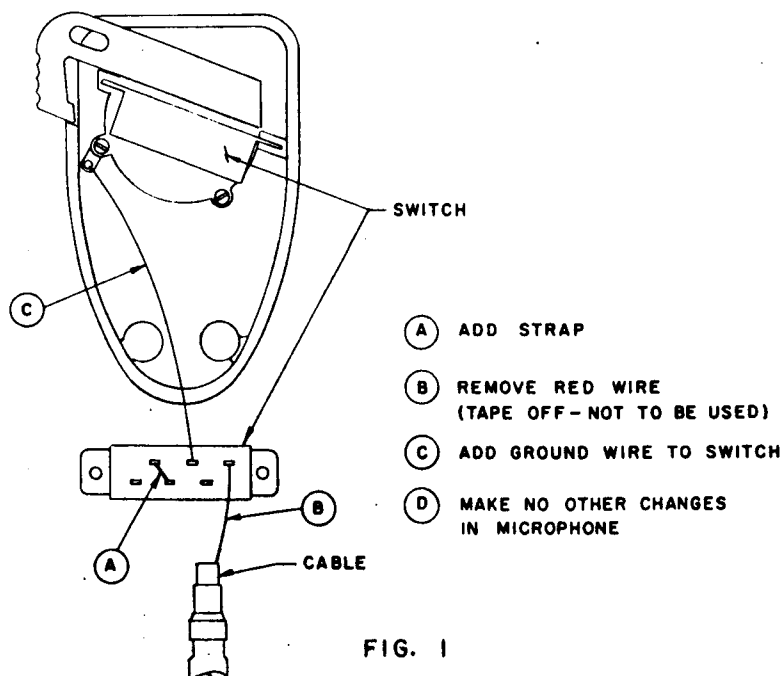


FIG. 1

The modifications required in the 1568A and 1569A amplifiers is shown in Figure 2, wherein a 15,000Ω, 20-watt resistor is connected between the "+" terminal of the main filter capacitor (C10 in the 1568A; C11 in the 1569A) and pin 5 of J2 (the socket normally used for the line input transformer). The adapter is constructed in accordance with the schematic illustrated in Figure 3; a suggested method of housing the completed adapter is also shown.

ADAPTER FOR USING 695 MICROPHONE
HAVING MODIFIED SWITCHING WITH
1568A AND 1569A AMPLIFIERS

Figure 2

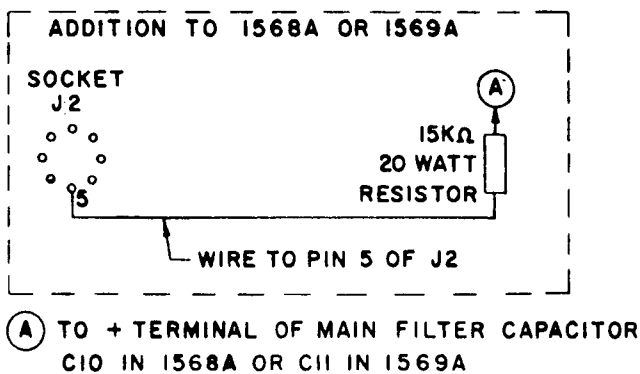
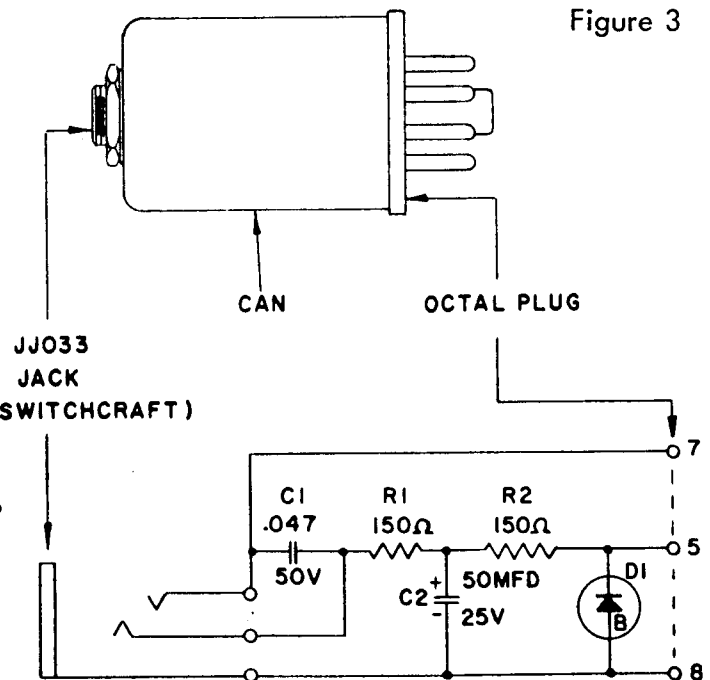


Figure 3



MATERIALS FOR ADAPTER:

- C1-.047MFD. 50VOLT TUBULAR PAPER CAPACITOR
- C2- 50MFD. 25 VOLT ELECTROLYTIC CAPACITOR
- R1-R2 -150 OHM 1/2 WATT RESISTOR
- DI-20VOLT ZENER DIODE, GE-Z4XL20 OR EQUIV.

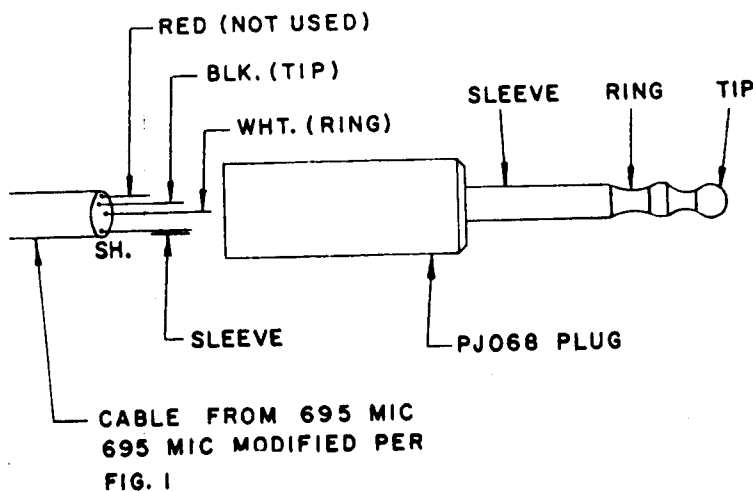


Figure 4

When the standard PJ-068 plug is used to connect the microphone to the adapter, the cable is connected as in Figure 4.